

WATCH OUT!

WE'RE THE **NEW TACKERS** IN TOWN.



NOVUS®

STAPLE GUNS.
FOR PRO'S. FOR ALL.

**PRECISION.
ERGONOMICS.
DURABILITY.**



DESIGNED FOR YOUR JOB.

Novus is a German manufacturer of professional staple guns for construction sites and workshops. We have been continuously improving our staple guns since we first launched them in 1950, and our engineers are always developing innovative product features to make your job easier. As tacker specialists, we now present an entirely new professional range of cordless, electric and hand tacker.



BRAND NEW

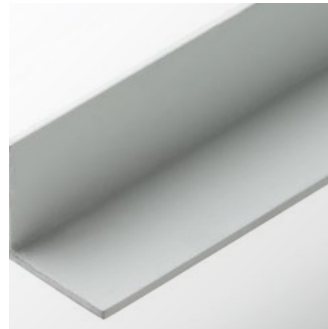
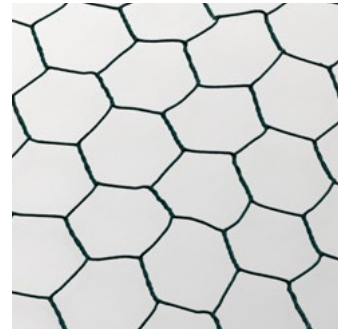


FINE WIRE STAPLES + NAILS

A

H

E



CLOTH
FABRIC
CARPET
WIRE
PLASTIC PANELS
WOOD STRIPS



FLAT WIRE STAPLES + NAILS

D

G

E



SHEETING

VAPOUR BARRIER SHEETING

(TAR/CARD)BOARD

INSULATION MATS

(FAUX) LEATHER/CORK

ALUMINIUM-LAMINATED PRODUCTS

WEATHER STRIPS

WAXED AND OILED PAPER

J-51



J-151



J-551





A close-up photograph of a person's hand resting on a white surface. The hand is wearing a black long-sleeved shirt and a silver ring on the ring finger. The background is a blurred indoor setting.

CAS rechargeable battery system

Powerful Cordless Alliance System
18V Li-ion battery, compatible with
all professional rechargeable battery
products from other CAS partners



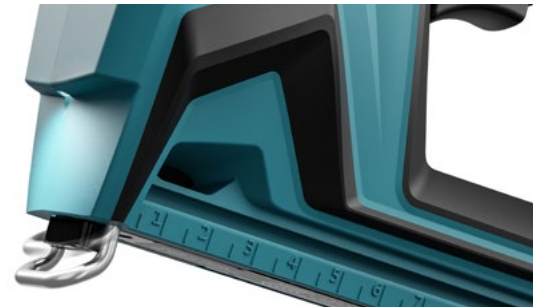
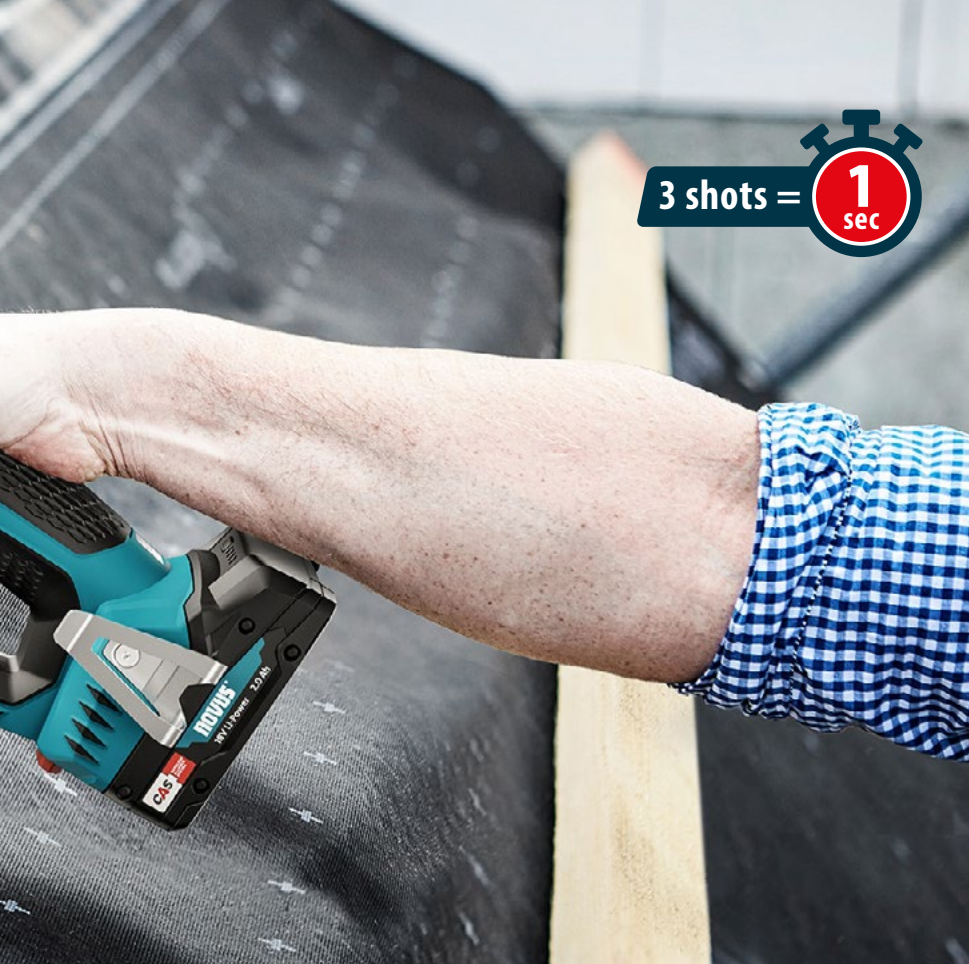
**ALWAYS
READY TO GO.
ON ANY
JOB SITE.**

CORDLESS STAPLE GUNS



Staple anywhere without the strain.

Our new cordless staple guns were developed specifically for professional use. Their optimal centre of gravity and ergonomic grip make them ideal for continuous, fatigue-free working on construction sites and in workshops, while their powerful CAS rechargeable battery offers the benefits of an electric staple gun at locations with no power outlet.



Speed

Rapid-fire function: fires three staples per second so you can work faster

Precision

Distance holder for parallel lines of staples and long nozzle for precise working

Depth stop

No matter how hard or soft the material: staples are always inserted to optimal depth

Ergonomics

Optimal centre of gravity and ergonomic grip for fatigue-free working

A close-up photograph of a roll of light-colored, textured fabric, possibly canvas or a similar heavy-duty material, resting on a wooden surface. The fabric is partially unrolled, showing its frayed edge and the underlying cardboard core. To the right, a blue and black tool, likely a utility knife or a similar cutting instrument, is visible, with the letters "SIL" partially legible on its side. The lighting is soft and directional, creating subtle shadows and highlights on the fabric's texture and the wooden surface.

**THE NEW
PROFESSIONALS
FOR YOUR
WORKSHOP.**



MILWAUKEE

6-14 mm 15 mm
A B E

1 2 3 4 5 6 7 8 9 10 11 12 13 14 15 16 17 18 19 20 21 22 23 24 25 26 27 28 29 30 31 32 33 34 35 36 37 38 39 40 41 42 43 44 45 46 47 48 49 50 51 52 53 54 55 56 57 58 59 60 61 62 63 64 65 66 67 68 69 70 71 72 73 74 75 76 77 78 79 80 81 82 83 84 85 86 87 88 89 90 91 92 93 94 95 96 97 98 99 100

ELECTRIC STAPLE GUNS



Staple gently and without the strain.

Electric staple guns can handle large volumes in a short time and with minimal physical effort. As powerful stapling tools, they are suited to time-consuming tasks and easy on your joints. Comfort and safety are our key priorities in product development and help make your work easier.



Impact force adjustment

Whether soft- or hardwood: always the right impact force for every job

Integrated staple pusher

For fast and easy reloading

Precision

Distance holder for parallel lines of staples and long nozzle for precise working

Convenience

Extra-long 3-metre cable for flexible working, even on ceilings



**OUR
PROFESSIONALS
FOR ANY TASK.**



HAND STAPLERS



Always ready to go.

They function mechanically for extremely flexible use: our new professional hand staplers are designed for specific jobs on construction sites and in workshops. We recommend the J-50 for upholstery and the J-51 for attaching sheeting. Smart product details allow easy, precise and ergonomic working.



Ergonomics

Lightweight, handy aluminium housing

Always to hand

Belt hook for easy attachment to work clothing enables streamlined workflows

Impact force adjustment

Whether soft- or hardwood: always the right impact force for every job

Precision

Distance holder for parallel lines of staples and long nozzle for precise working

THE FEATURES

		 J-50	 J-51
Infos	Article number / EAN PU: Single device pack including starter staple set	030-0449 4009729078402	030-0450 4009729078426
	Article number / EAN PU: System case including battery, charger and staples		
Klammern	Fine wire staple for cloth and fabric Type / length in mm	A/H 6-14	
	Flat wire staple for sheeting Type / length in mm		D/G 4-10
	Nail Type / length in mm	E 16	E 16
Features/Ausstattung	Handle lock for space-saving storage	■	■
	Staple window so you can easily check fill level	■	■
	Distance holder for a neat, parallel line of staples	■	■
	Precision nozzle for exact working	■	■
	Impact force adjustment for optimally inserted staples	■	■
	Depth stop for optimally inserted staples		
	Belt hook, attachable on either side so your tacker is always to hand	■	■
	Ergonomic grip design for fatigue-free working		
	Long cable for flexible, safe working		
	Blank firing guard only fires when nozzle is placed against material		
Rapid-fire function fires 3 staples per second			

All Novus staple guns are GS certified.





J-120

031-0362
4009729077740



J-150

031-0360
4009729077702



J-151

031-0361
4009729077726



J-550

031-0363 / 4009729079287
battery and charger not included

031-0364 / 4009729079324
includes battery and charger



J-551

031-0365 / 4009729079300
battery and charger not included

031-0366 / 4009729079331
includes battery and charger

A
6-14

A/H
6-14

A/H
6-14

D/G
6-14

D/G
6-14

E
16

E
16

E
16

E
16

E
16

■

■

■

■

■

■

■

■

■

■

■

■

■

■

■

■

■

■

■

■

■

■

■

■

■

■

■

2 metres

3 metres

3 metres

■

■

■

■

■

■

■

German engineering – clever products that let you work ergonomically at high speed.



#HASHTACK



Novus Dahle GmbH
Breslauer Straße 34 – 38
49808 Lingen (Ems)
Germany

Tel. +49 (0) 591 9140-0
Fax +49 (0) 591 9140-841
info@novus-dahle.com

www.novus-tools.com

NOVUS[®]